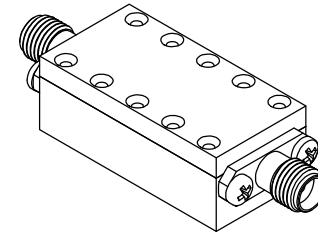


| REVISIONS |      |             |                |            |
|-----------|------|-------------|----------------|------------|
| ECN       | REV. | DESCRIPTION | CHNG/DATE      | APPVD/DATE |
|           | 0    | PRELIMINARY | 2016-07-07/JSW |            |
|           |      |             |                |            |

**NUWAVES ENGINEERING PROPRIETARY INFORMATION**  
 THIS DOCUMENT IS THE SOLE PROPERTY OF NUWAVES ENGINEERING  
 THE RELEASE OF DATA CONTAINED IN THIS DOCUMENT AND THE  
 REPRODUCTION OF THIS DOCUMENT, IN WHOLE OR IN PART, WITHOUT THE  
 WRITTEN PERMISSION OF NUWAVES ENGINEERING, INC. ARE PROHIBITED.

**ELECTRICAL SPECIFICATIONS:**

C.F. = 8325 MHz NOMINAL  
 I.L. = 0.6 dB MAX @ 8325 MHz  
 FLATNESS WITHIN 0.5 dB OVER 7800 TO 8850 MHz  
 VSWR = 1.5:1 MAX OVER 7800 TO 8850 MHz (REF 50 OHMS)  
 15 dBc MIN @ 9300 MHz  
 35 dBc MIN @ 10500 MHz  
 OPERATING TEMPERATURE: 0 TO 60 °C  
 POWER HANDLING = 1 WATTS C.W.

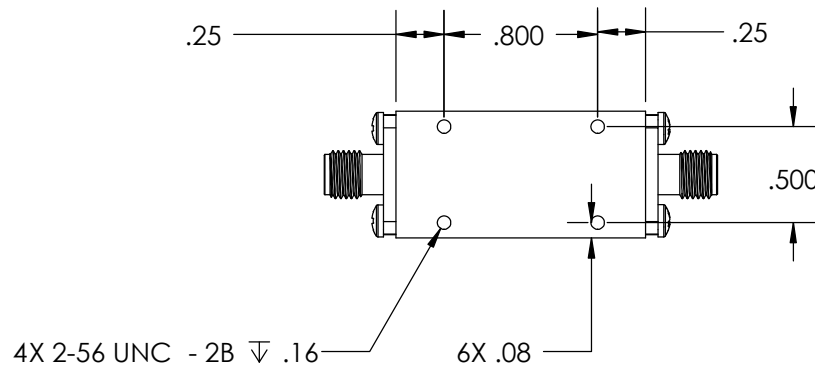
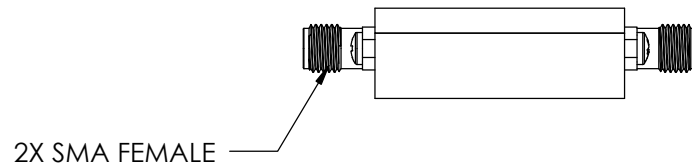
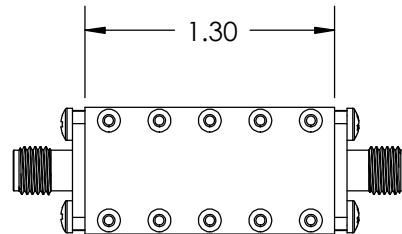
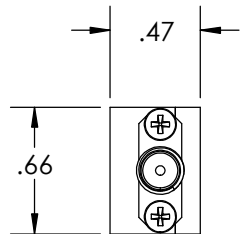


**APPLIES TO MODEL NW-FL-04BPCV-8325-SFSF-M01**

|   |  |                    |  |           |                                    |                 |
|---|--|--------------------|--|-----------|------------------------------------|-----------------|
| <b>UNLESS OTHERWISE SPECIFIED</b><br><br><small>* INTERPRET DRAWING IAW ASME Y14.100-2004<br/>         * DIMENSIONING AND TOLERANCING IAW ASME Y14.5-1994<br/>         * PARENTHETICAL INFORMATION FOR REFERENCE ONLY<br/>         * DIMENSIONAL LIMITS APPLY BEFORE PROCESSES<br/>         * DIMENSIONS ARE IN INCHES<br/>         * TOLERANCES ARE: ANGLES ±1.0° 2 PLACE DECIMAL ±.02<br/>         * SURFACE FINISH 63 3 PLACE DECIMAL ±.005<br/>         * REMOVE ALL BURRS AND SHARP EDGES .010 RAD MAX.<br/>         * CONCENTRICITY MACHINED DIA: .002 FIM<br/>         * MACHINED TOOL MISMATCH: .002 MAX.</small> | <small>3rd ANGLE PROJECTION</small><br><b>ANSI</b> |                    | <b>NUWAVES ENGINEERING</b><br>122 Edison Dr.<br>Middletown OH, 45044 (USA) |           |                                    |                 |
|   | DRAWN<br>JSW                                       | DATE<br>2016-07-07 | <b>FILTER, BANDPASS, COMBLINE -<br/>         OUTLINE DRAWING</b>           |           |                                    |                 |
|   | CHECKED<br>---                                     | ---                |  |           |                                    |                 |
|   | ENGRG<br>---                                       | ---                | SIZE<br><b>A</b>   | CAGE CODE | DWG NO.<br><b>ENVELOPE DRAWING</b> | REV<br><b>0</b> |
|   | MFG<br>---   | ---                | SCALE: <b>1:1</b>  |           | SHEET <b>1</b> OF <b>2</b>         |                 |
| QA<br>---   | ---  |                    |  |           |                                    |                 |
| <b>DO NOT SCALE DRAWING</b>   |  |                    |  |           |                                    |                 |

NOTES:

1. MATERIAL: HOUSING - AL ALLOY, LID - AL ALLOY
2. FINISH: NONE
3. CONNECTORS MIL-C-39012 COMPLIANT



|          |              |                         |               |
|----------|--------------|-------------------------|---------------|
| SIZE     | CAGE CODE    | DWG NO.                 | REV           |
| <b>A</b> | <b>1ZJ73</b> | <b>ENVELOPE DRAWING</b> | <b>0</b>      |
| SCALE:   | <b>1:1</b>   | SHEET                   | <b>2 OF 2</b> |

# Bandpass Filter: NW-FL-04BPCV-8325-SFSF-M01, 2016-07-07

